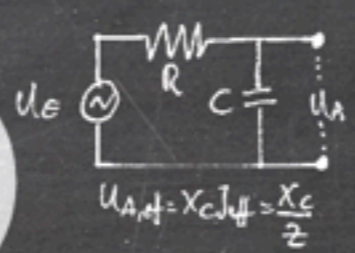


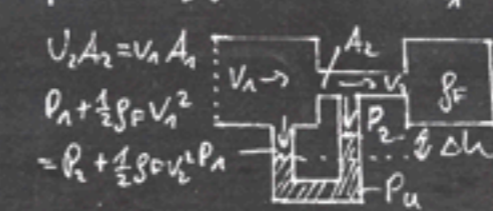
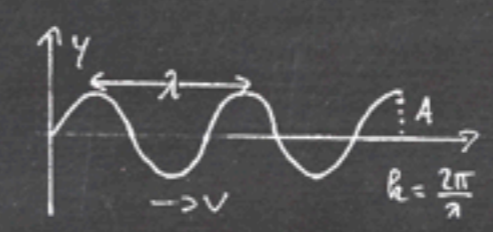
$$\delta = \delta_2 + \mu_0 H = \delta_2 (1 + \lambda_{mag})$$

$$= \mu_0 \mu_0 h J = \mu h J$$



$$u_{A,eff} = X_C I_{eff} = \frac{X_C}{Z} u_e$$

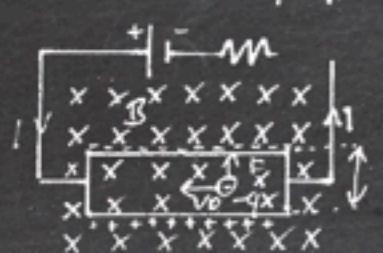
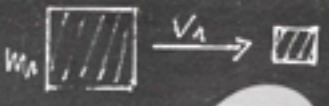
$$s = u \cdot h$$



$$U_1 A_2 = U_2 A_1$$

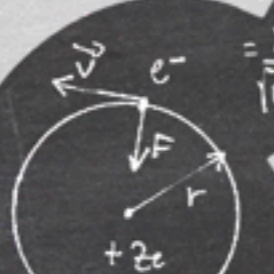
$$P_1 + \frac{1}{2} \rho_F v_1^2 = P_2 + \frac{1}{2} \rho_F v_2^2$$

$$\frac{1}{2} \rho_F (v_1^2 - v_2^2) = (\rho_F - \rho_F) g h$$



$$|F| = \frac{1}{4\pi\epsilon_0} \frac{ze^2}{r^2}$$

$$= \frac{mv^2}{r}$$

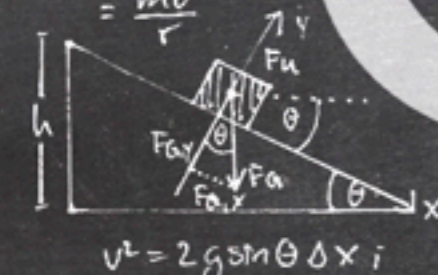


$$u_H = -\int \vec{\omega} \cdot \left(\frac{v}{v}\right) dl$$

$$= \frac{X_C U_{eff}}{\sqrt{R^2 + X_C^2}}$$

$$\frac{A'B'}{A\dot{u}} = \frac{s'}{s}$$

energy = me κ community



$$v^2 = 2g \sin \theta \Delta x$$

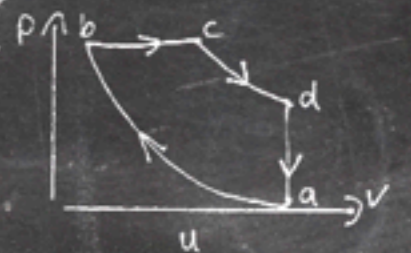
$$b \frac{u}{v} = \frac{1}{A q v b} - \frac{1}{b d e v d}$$

$$= -\int \vec{\omega} \cdot d\vec{e} u_H$$

$$u_H = E_H b = v d B b$$

$$j = \frac{v}{v} q v d A$$

$$v^2 = 2g \sin \theta \Delta x$$



$$F = m_2 g + 2F_s$$

$$a = \frac{dv}{dt} = \frac{dv}{du} \frac{du}{dt}$$

$$= \frac{(m_2 - m_1) g}{(m_1 + m_2)}$$

$$v = \sqrt{\frac{2(m_2 - m_1) g h}{(m_1 + m_2)}}$$

PART 5

That The World Will Know

$E=mc^2$
energy = me x community



$$M \times C^2 = \text{Energy}$$

(me) (community)

potential
exponentially
unleashed

$$E = mc^2$$

energy = me \times community

“All the believers were together and had everything in common.”

A C T S 2 : 4 4

John 17:23

“Father, just as you are in me, I am in them. So may they be in such perfect unity that the world will know you sent me and you love them as much as you love me.”

Ephesians 2:11-22

Remember that at one time you who are Gentiles by birth and called “uncircumcised” by those who pride themselves in circumcision were separate from Christ, excluded from citizenship in Israel and foreigners to God’s covenant with them, without hope and without God. But now in Christ you who once were far away have been brought near through his blood.

Ephesians 2:11-22

For he himself is our peace, who has made Jew and Gentile one by destroying the dividing wall of hostility, abolishing by his sacrifice the Jewish law with its rules. He made peace between Jews and Gentiles by creating in himself one new people from the two groups, reconciling both of them to God through the cross. He came and preached peace to you who were far away and peace to those who were near.

Ephesians 2:11-22

Now through him we both have access to the Father by one Spirit. Consequently, you are no longer foreigners, but fellow citizens with God's people, members of God's family. Together, we are his house, built on the foundation...with Jesus himself as the cornerstone. In him the whole building is joined together and rises to become a holy temple in the Lord ... a dwelling in which God lives by his Spirit.

A young girl with a blue headscarf and a blue and white patterned shirt is looking through a fence made of barbed wire. The background is slightly blurred, showing what appears to be an outdoor setting with some structures. The overall tone is somber and contemplative.

“You were separate from Christ, and excluded from citizenship in Israel.”

Ephesians 2:12

A young girl with a blue headscarf and a blue and white patterned shirt is looking through a fence made of barbed wire. The background is slightly blurred, showing other people and structures. The overall tone is somber and contemplative.

"...you were foreigners to God's covenant with them."

Ephesians 2:12

Marginalized

"You were Gentiles...
uncircumcised...foreigners
of the covenant."

Verses 11-12

Alienated

"You were separate from Christ,
excluded from citizenship in Israel,
foreigners to God's covenant."

Verse 12

Suppressed

"You were without hope and
without God in the world."

Verse 12

A young girl with a blue headscarf and a patterned jacket stands behind a barbed wire fence. She is looking directly at the camera with a serious expression. The background is slightly blurred, showing other people and structures. The word "Marginalized" is written in a yellow, cursive font across the top of the image.

Marginalized

Integrated

Integrated

"You who were once far away have been brought near through the blood of Christ. For he...has destroyed the barriers, the dividing wall of hostility, by abolishing...the Jewish law and its rules."

Verse 13-16

A young girl with a blue headscarf and a patterned jacket is looking through a barbed wire fence. The fence is made of several strands of wire, and the girl is holding one of the strands. The background is slightly blurred, showing some greenery and a building. The overall tone is somber and evocative.

Alienated

Embraced

Embraced

"We have access to the Father by one Spirit, no longer foreigners and aliens, but fellow citizens with God's people and members of God's family."

Verse 18-19

A young girl with a blue headscarf and a patterned jacket is looking through a barbed wire fence. The background is blurred, showing other people and structures. The text "Excluded from God's presence" is overlaid in yellow cursive font.

*Excluded
from God's presence*

*Erected
as God's Temple*

Erected as God's Temple

"You are part of that building
Christ has built as a place for
God's own Spirit to live."

Verse 22

Evangelistic Impact of Community

Evangelistic Impact of Community

1

Never forget
what it was like to
be excluded.

Evangelistic Impact of Community

Evangelistic Impact of Community



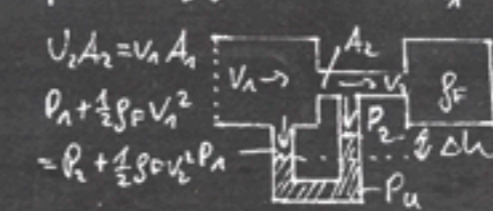
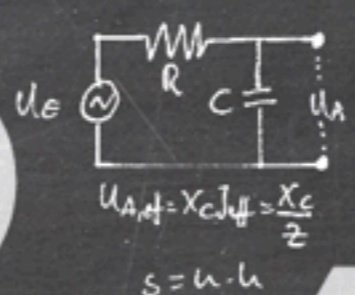
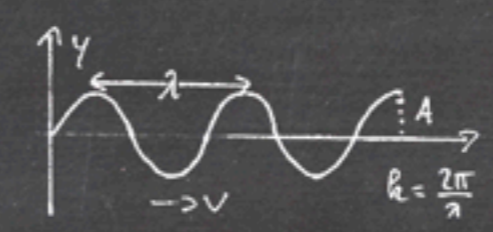
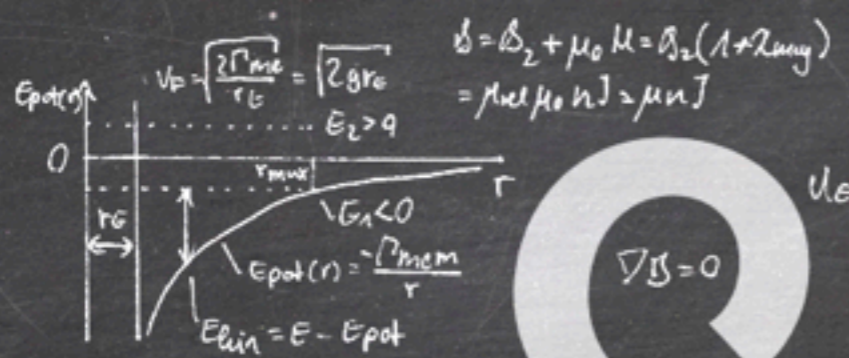
Always embrace
anyone who comes
looking to
experience God.



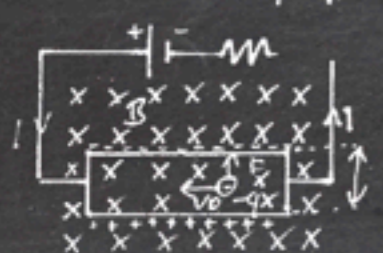
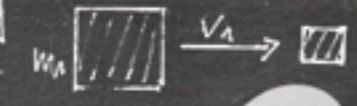
Sunday, September 29, 2013

A black silhouette of a cross is positioned on the left side of the frame, extending from the bottom towards the top. The background is a bright blue sky filled with soft, white, fluffy clouds. The lighting suggests a bright day, with the sky being a vibrant blue and the clouds catching the light.

All ground is
level beneath
the cross.



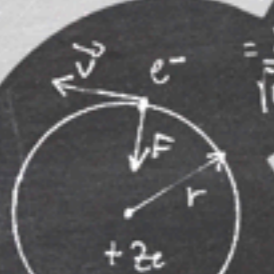
$\frac{1}{2} \rho_F (v^2 - 1) V_1^2 = (\rho_F - \rho_F) g_0 h$



$|F| = \frac{1}{4\pi\epsilon_0} \frac{ze^2}{r}$
 $= \frac{mv^2}{r}$



$b \frac{u}{v} = \frac{1}{A q v b} - \frac{1}{b d e v d}$
 $= - \int \vec{J} \cdot d\vec{e} U_H$



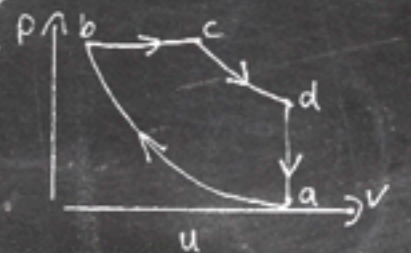
$\frac{A' B'}{A \dot{u}} = \frac{S'}{S}$

$U_H = E_H b = v d B_0$
 $J = \frac{v}{V} q v d A$

$v^2 = 2g \sin \theta \Delta x$

$E = mc^2$

energy = me κ community



$F = m_2 g + 2F_3$
 $a = \frac{dv}{dt} = \frac{dv}{du} \frac{du}{dt}$
 $= \frac{(m_2 - m_1) g}{(m_1 + m_2)}$
 $v = \sqrt{\frac{2(m_2 - m_1) g h}{(m_1 + m_2)}}$

PART 5

That The World Will Know